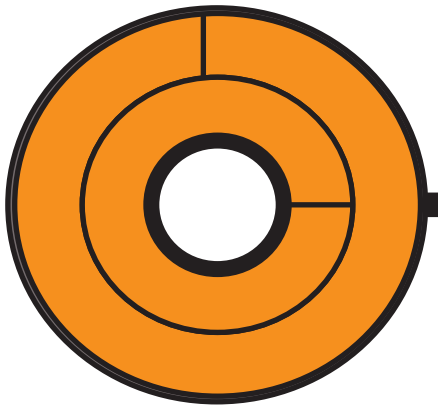


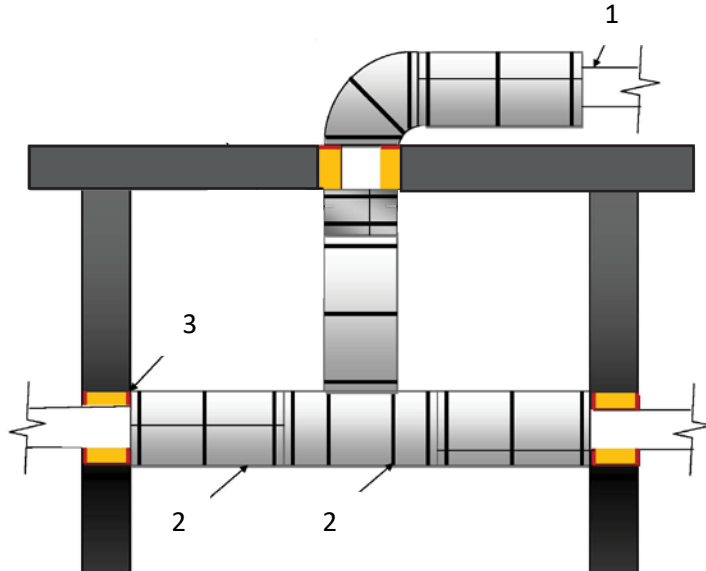
METAL PIPE FIRE PROTECTION

For Natural Gas and Fuel Pipes

0-2 HOUR FIRE RESISTANCE RATING



Installation for up to a 2-hour Fire Rating



1. Metallic Pipe – Schedule 40 Steel, Cast Iron or Copper to 8” nominal diameter.
2. Two layers of CL4FIRE - Red or CL4FIRE Code-96™ Fire Protection Thermal Insulation installed with seams tightly butted.
Minimum 3/8” diameter steel threaded hanging support rods are allowed to extend through the insulation but the opening must be snugly sealed with insulation or filled with 1/2” depth of a listed firestop caulking to a maximum opening size of 1/4”. Joints should be foil tape with a 25/50 listed product for additional integrity. CL4FIRE may be installed in the longitudinal direction if desired.
1/2” wide stainless steel banding installed 1 1/2” from both sides of insulation joints and maximum 8” apart.
3. CL4FIRE insulation must snugly abutt or pass through any listed firestop system on both sides of a concrete or gypsum floor or wall assembly.